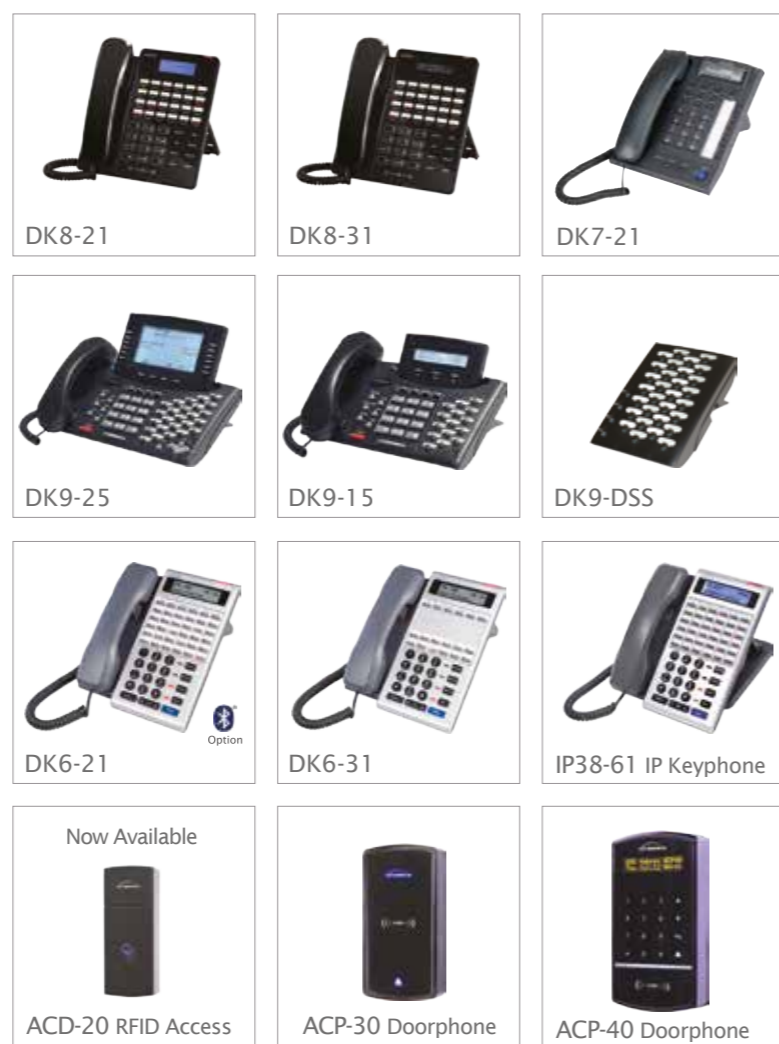


Key System Features

- Account Code Capability
- Access Control Phone*
- Answering Machine Emulation*
- Automatic Answer - Intercom
- Auto Attendant with Overflow
- Auto Attendant* - Advanced Multiple Scripted
- Auto Redial
- Busy Lamp Field
- Barge-In
- Calendar and Real Time Clock
- Call Accounting
- Call Blocking
- Call Pickup
- Call Forward - Busy/No Answer/All calls
- Call Recording*
- Call Transfer
- Camp On
- CLI on both Internal and External calls
- Conference
- Day and Night Service
- Group Listening
- DND (Do Not Disturb)
- DISA (Direct Inward System Access)
- Distinctive Ringing
- Forced Account Code Assignment
- LCR (Least Cost Routing)
- Last Number Redial
- Macro Keys
- Music On Hold - Recordable
- On-Call Programming
- Paging - Internal and Meet Me
- Paging - External*
- Pick-Up
- Privacy Release
- Programmable Keys
- Remote Software Upgrade by Modem*
- Remote Programming*
- Power Supply with Charger
- Station Group
- SLT Station Caller ID Service
- SLT Industry Standard 90V Message Light Compatible
- SMDR (Station Message Detail Record)
- Speed Dial - System (900 Sets Max.)
- Speed Dial - Personal (20 Sets Max.)
- Trunk Group
- Toll Restriction
- Virtual Mail Box*
- Voice Mail*
- Voice Mail* - Advanced, with Unified Messaging
- VoIP Call - Point-to-Point *
- VoIP Call - Point-to-Multi-point*
- VoIP Call - DID Calls (Direct Indial)*

*: Optional Equipment and cost will be required for this feature.

G1E Plus System Cabinet Specifications & Capacities	
	Maximum ports
Analog CO Line	8
ISDN BRI	6 (12 channels)
VoIP Trunk - SIP	8
Digital Key Station	24
Single Line Telephone	20
Access Control Phone	24
Auto Attendant - Basic/Optional	4 / 6
Voice Mail - optional channel	4
KSU Dimension - L x W x H (mm)	425 x 315 x 90 mm
G1E+M Multi-Cabinet Options	Up to 4 Cabs (160 ports)



Not all telephones are available in all markets. Consult your local dealer



Hybrex Partner :

Auto Telecom (Australia) Pty. Ltd.

Unit 7, 3 Gibbes Street, Chatswood, NSW 2067
Tel: +61 2 94150100 Fax: +61 2 94176877
Email: business@hybrex.com.au www.hybrex.com.au

Auto Telecom New Zealand Ltd.

Unit i, 55 Druces Rd, Wirri, Manukau, Auckland, NZ.
Tel: +64 9 260 4009 Fax: +64 9 263 7373
Email: sales@hybrex.co.nz www.hybrex.co.nz

Auto Telecom Company Limited.

10F, No.3, Lane 16, Sec. 2, Sichuan Rd.,
Banqiao City, Taipei County 220, Taiwan
Tel: +886-2-8966-1356 Fax: +886-2-8966-5764
Email: inquiry@hybrex.com www.hybrex.com

Design and specifications are subject to change without notice



G1E Plus Series 40+ Port Hybrid IP Communication System

VoIP ISDN PSTN
NBN Ready



• Trust • Integrity • Innovation



The G1E-Plus is a Hybrid IP Communication System combining the advantage of a traditional Telecommunications Platform along with the convergence of VoIP technology allowing a flexible solution that best suits the diverse needs of your business. This integrated IP-based capability protects the customers investment and ensures a wide range of options for expanding the customers information and communication infrastructure as their business grows. The G1E-Plus also has the option to be upgraded to the GDS series platform for enhanced performance and system growth.

Designed to cater for most small businesses, right out of the box, the base platform will support up to eight digital system phones configured to make the most of your productive day. For users that need mobility up to four industry standard cordless telephone sets can also be accommodated on analogue ports.

The Hybrex G1E plus key telephone system is compatible and will integrate with the NBN and is currently being used by thousands of businesses around Australia every day. When you choose to install a Key Telephone System such as the Hybrex G1E plus system, you will stay in control of your system features such as the onboard Paging, Intercom and Access Control capabilities. Using a battery backup solution in the event of a blackout will provide you limited communication ability depending on your redundancy solution in place. The onboard Access Control solution allows you to control the access to your business, utilising an Access Control Door phone connected to the same system. (Speak to our authorised representative for more information on this feature).

Flexibly connect on your own terms with a variety of outside line choices. The G1E Plus can serve as a branch office system for multi-site VoIP applications, or realise the economy of VoIP trunking to traditional networks, via the NBN. The choice of efficient ISDN or PSTN lines is also available. Or combinations of the above can be used. Whatever your needs the G1E Plus offers a variety of ways to communicate !

The G1E Plus base system can be expanded to a 40 port capacity. But this is not it's limit - there are further expansion options available with many sophisticated features that can be incorporated.

Voice Services Features enhance call handling

All G1E Plus systems are equipped with a standard Auto Attendant and recordable Music-on-Hold feature. The Optional Voice Mail card will add the following valuable voice service features :

- **Auto Attendant :**
Increases the standard 4 ports to 6 automated attendant ports to answer incoming calls simultaneously.
- **Voice Mail :**
Every station has its dedicated voice mail box to let callers leave messages when you are busy or not at your desk. Virtual Mail Box capability allows you to assign mailboxes for associates who don't have a physical phone on the system, or to record and play special announcements - for product promotion for example.
- **Conference Rooms :**
Conference rooms with a maximum of 8 participants. There are up to 5 rooms when each room has 3 participants.

Other standard G1E Plus feature advantages :

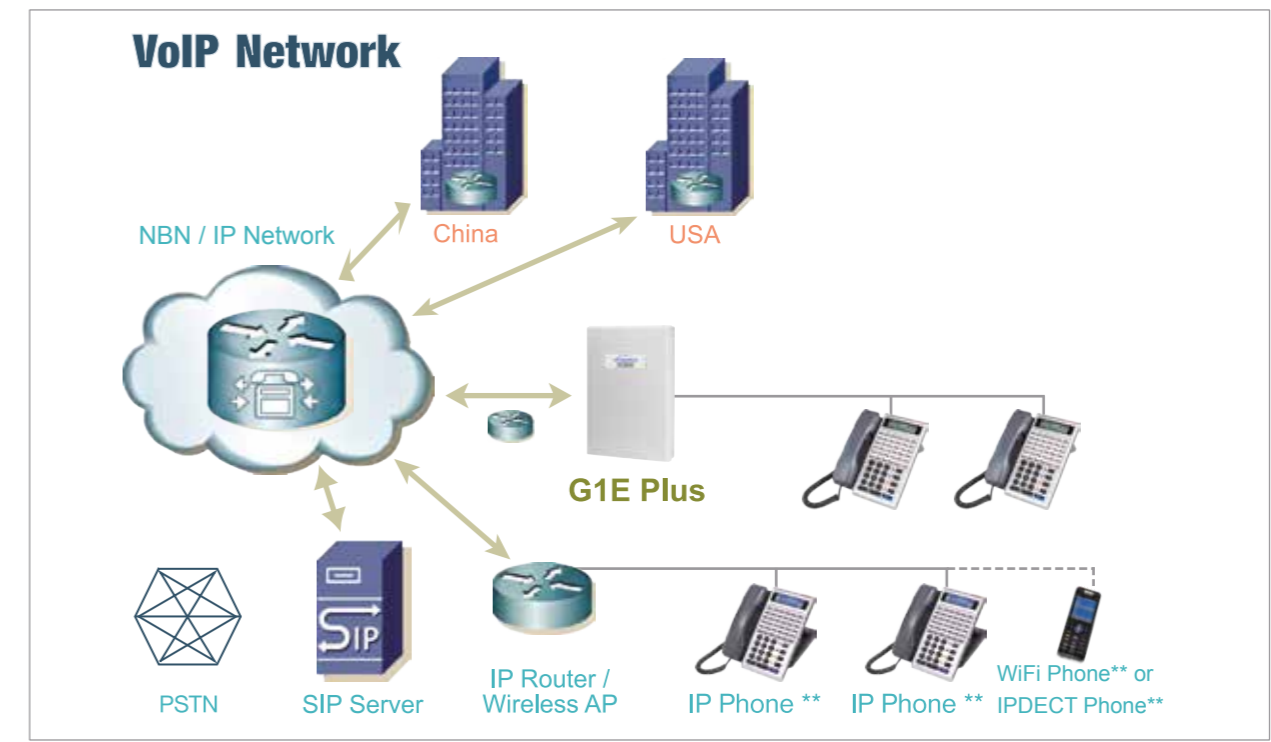
- **Dual Porting :**
Pair digital and analogue extensions with the same extension number, and the ability to transfer between them. So you can have your desk phone and a wireless phone as well allowing you maximum mobility in your business while you stay in touch.

G1E Plus M Options :

Add the optional G1E-MPUN Processor module to the G1E Plus and all of the sophisticated features inherent in our flagship GDS range of systems become available to you on what is now the "G1E Plus M" platform. Two models of Processor module are available: MPUN1 for single cabinet operation, and MPUN4 that allows system expansion to a maximum of 4 cabinets (160 ports). Some other highlights of the G1E Plus M feature set options are :

- **Advanced Voicemail / Unified Messaging ***
MPUN On-Board Advanced Messaging System, as well as providing high level voicemail features such as Voice Mail to Email, also allows for a sophisticated Auto Attendant facility with 8 separate Auto Attendants and multi-level scripting meaning multiple businesses can be accommodated on the same system, with more options and better control of incoming calls from your customers.
- **Call Recording : ***
Record your business calls as desired using the new MPUN On-Board Advanced Messaging System. Recording options are: trunk calls : all or on demand; extension level (all calls). Recordings can be paused. Options are: 2 channel or 4 channel, onboard recording depth of 125 hours or 250 hours. Recording can be configured to automatically upload to a network server so recordings are available indefinitely. G1E-AMS module option is also available should greater capacity - eg 8 channels - be required.
- **IP Extensions ***
Internet connected IP phones with the same behaviour and functions as standard digital system extensions. Support your tele-workers with system phone facilities equivalent to that of your office personnel.
- **Hospitality / Accommodation Packages**
Hotel Call accounting, Room Status, Hotel Voicemail *, Emergency Services features *, Access Control, Room Budgets, PMS Interface, and many more.
- **LAN Connectivity**
LAN connectivity and the Web browser interface of the G1E Plus M provide a host of useful features such as : easy remote support for your system; easier and more extensive user programming of extension and console phone functions; access to system Hospitality features, system ACD functions, extra CTI interfaces, and more.

* = Additional equipment, and cost, may be required. Some options may be mutually exclusive.



** Note : IP Extensions require G1E+M Option plus supporting extension card.